



FSC - MIXED SOURCES

RECYCLE  
BUG

SUPERIOR  
printing

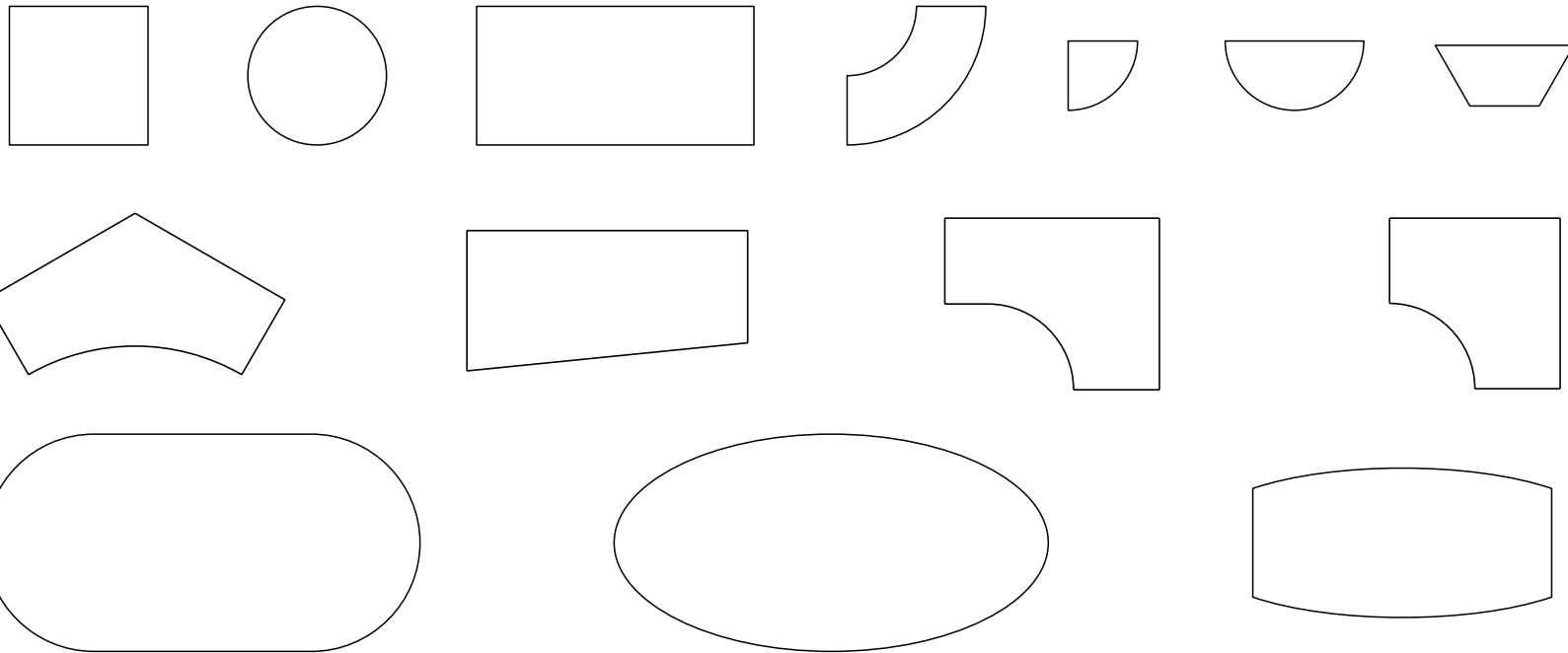
SYMPHONY®

table environments

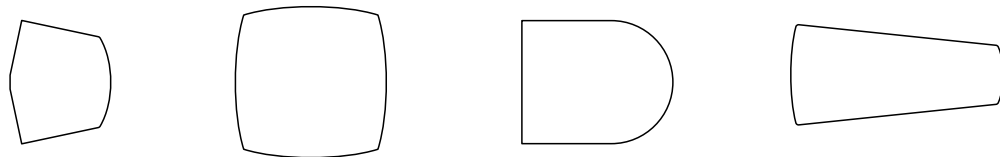
SYMPHONY® surfaces



# shapes and sizes



## custom shape examples



We offer tops in virtually any shape and size. If one of our standard tops is not exactly what you need, we will produce your custom top within our standard lead time in most

cases. For the most complete list visit our website at [www.symphonytables.com](http://www.symphonytables.com) or contact one of our Table Specialists who can assist you with your design.

# lamininate



Wilsonart, Formica, and Pionite laminates are GREENGUARD Indoor Air Quality Certified® and GREENGUARD for Children and Schools Certified SM. Symphony produces tops with virtually any laminate. Our standard laminate offering includes hundreds of laminates from Wilsonart, Formica, Nevamar and Pionite. However, Wilsonart and Formica laminates tend to offer the most laminates at standard pricing. Non-standard laminates are available with potential up-charges and extended lead-times. To verify pricing and lead-time, please visit [www.symphonytables.com](http://www.symphonytables.com) or contact one of our Table Specialists. To check availability or to order any samples please contact the laminate companies directly.

[www.wilsonart.com](http://www.wilsonart.com) 800-433-3222  
[www.formica.com](http://www.formica.com) 800-FORMICA  
[www.nevamar.com](http://www.nevamar.com) 800-638-4380  
[www.pionite.com](http://www.pionite.com) 800-746-6483

# vinyl and PVC edge profiles

pvc



PVEA

vinyl



VNEA



VNBP

Symphony offers vinyl and 3mm (PVC) edges in a variety of profiles and finishes. We also offer a unique three side flat 3mm with bullnoseshaped vinyl user side edge (VPBN). Symphony offers a variety of standard vinyl and 3mm finishes plus non-standard finishes available for projects. Please contact Symphony for details (\* Amber Maple, Classic Mahogany and Wild Cherry edge finishes only available on PVEA).

finishes



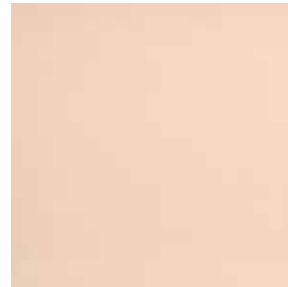
dove gray



folk stone



kahki brown



light beige



wild cherry



amber maple



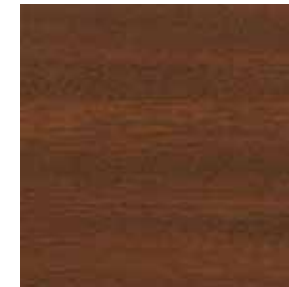
brownstone



graphite



black



classic mahogany



nubian brown

vinyl



VNFL



VNBN



VNKF

vinyl/pvc

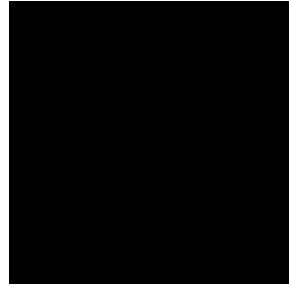


VPBN

finish



satin aluminum



black

# urethane edge profiles

## urethane



URBN



URER

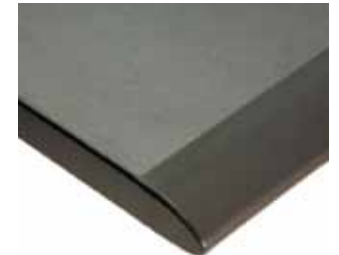


UREA



URND

## urethane/pvc



UPER

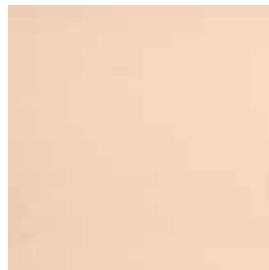
## finishes



dove gray



folk stone



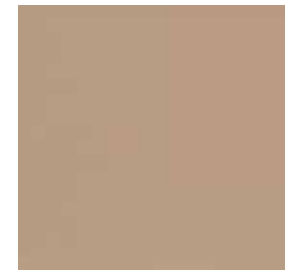
light beige



brownstone



black



kahki brown

Urethane is comprised of approximately 65% refined vegetable oil by weight. Vegetable oil is a rapidly renewable, natural, durable material. The extreme durability results in a longer lifespan than edges made from other materials. Urethane edges are available in a variety of profiles and finishes. We also offer a unique combination

ergo urethane with flat PVC (UPER) and knife urethane with flat PVC (UPKN). The shaped urethane profile is applied to the user side with flat PVC applied to front and sides. Symphony offers a variety of non-standard finishes available for projects. Please contact Symphony for details.

# matching edge



Symphony offers numerous 3mm edges which match laminate surfaces. This includes not only solids, but wood grain and abstract patterns. This solution is most more durable and cost effective than self laminate edges.

# lamininate edge profiles

Symphony offers laminate edges are available in virtually any laminate. Please note that laminate edges are the least durable edge solution. We encourage selecting one of our many matching 3mm edges which provide a extremely durable, cost effective solution.

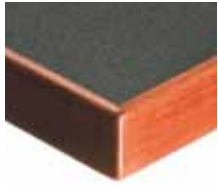


LASE

LAPF



# wood edge profiles



WAEA



WCEA



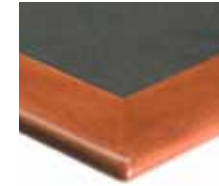
WCBN



WDEA



WDBN



WFKR



WFER

# bamboo wood edge



	height	depth	profile
WAEA	1.25"	.125"	eased
WCEA	1.25"	.75"	eased
WCBN	1.25"	.75"	bullnose
WDEA	1.25"	1.25"	eased
WDBN	1.25"	1.25"	bullnose
WFKR	1.25"	2"	knife rounded
WFER	1.25"	2"	ergo
WDED	1.75"	1.25"	eased

This rapidly renewable resource can be sustainably harvested and replenished with virtually no negative impact to the environment. Bamboo has a hardness equivalent to Northern hard maple. It is available in any wood edge profile with a Carbonized or Natural finish.

# wood finishes



Fusion Maple



Wild Cherry



Biltmore Cherry



Brighton Walnut

Our standard wood finishes match Formica and Wilsonart laminates. We also offer wood finishes that match our reconstituted veneer surface finishes. Custom wood finishes are available at an up-charge.

Finishes and colors shown are printed reproductions. Due to material, printing and computer limitations, these finishes are offered as guidelines only. Actual finishes may vary.

# linoleum



225 Bio Dune



232 Bio Marine



231 Bio Ore



230 Bio Sand



223 Bio Blue



227 Bio River



226 Bio Street



228 Bio Slate



229 Bio Loam

As an option to laminate, we offer surfaces with Marmoleum® linoleum by Forbo. This allergen free, non-petroleum based, biodegradable material is manufactured from 33% rapidly renewable resources including linseed oil, limestone, cork flour, rosin, jute and organic pigments. Pre-Consumer Recycled Content of 45% by weight. Sustainable Materials Rating Technology (SMART) certified and Collaborative for high performance schools (CHPS) section 01350 Compliant. The linoleum surface is extremely durable (burn & scuff resistant) and self healing (small scratches & shallow cuts repair themselves -gradually shrink back together). Color all through the product gives depth of color and enhanced durability. There are naturally present bacteria fighting agents and anti-static properties make for a sanitary, easy to maintain, durable surface.

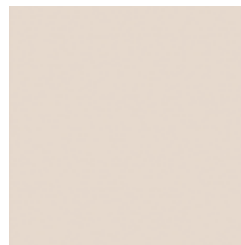


# abs

The 2mm recyclable plastic edge is available in an array of standard colors. The Chlorine Free Polymer can be incinerated. Anti-static properties will not collect dust.



ABEA



Almond



Pebble



Black



Dove Grey



Slate Grey

# quick ship



Need products to deliver sooner than our standard 4-5 week lead time? Symphony offers round, square and rectangle 3mm edge tables with bases in silver or black finishes that can be produced in days versus weeks. For the most up to date listing please visit [www.symphonytables.com](http://www.symphonytables.com) or contact Symphony Tables.

# light weight

HPL or reconstituted veneer surface, honeycomb center with particleboard perimeter core

- Reduces top weight 35%
- Top shapes & sizes up to 42 x 90
- Most vinyl, 3MM, laminate or wood edge profiles and finishes
- Minimum of 10 per order



Finishes and colors shown are printed reproductions. Due to material, printing and computer limitations, these finishes are offered as guidelines only. Actual finishes may vary.

# environmental statement & solutions

Everyone at Symphony shares the concern of protecting the environment. We use environmentally friendly materials in our products and processes wherever possible. Environmental awareness is something we strive to incorporate into every aspect of our lives. Recycled/recyclable packing/shipping materials are used whenever possible. All plastic, cardboard, scrap metal (steel, stainless steel, & aluminum), used oil, and wood pallets accumulated from the manufacturing process are recycled. All our marketing materials are printed on recycled/recyclable paper. Symphony is committed to bringing you the designs & solutions needed for your project but also dedicated to preserving the Earth's natural resources for the future.

## adhesives

Water based adhesives with no urea-formaldehyde results in low VOC emissions

## surface core or substrate

Symphony's standard M3 industrial grade 45 lb. density particle board top core is produced with 100% pre-consumer recycled wood fiber particle board certified by Scientific Certification Systems (SCS) and is at least 90% wood fiber by weight. It even meets California Air Resources Board (CARB) Regulation 93120.2, Phase 1 emissions limits. No Added Urea-Formaldehyde (NAUF) particleboard core available as option. This core meets California Air Resources Board (CARB) Regulation 93120.2, Phase 1 emissions limits, Collaborative for High Performance Schools (CHPS) Section 01350 Compliant, and Environmentally Preferable Product (EPP) Certified by the Composite Panel Association

